



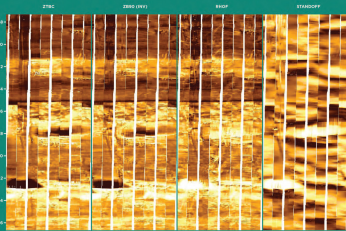
**The Society of
Petrophysicists and
Well Log Analysts**

8866 Gulf Freeway, Suite 320
Houston, TX 77017, USA
P: +1-713-947-8727
F: +1-713-947-7181
Email: Sharon@spwla.org
Membership@spwla.org
www.SPWLA.org

ISSN: 1529-9074

PETROPHYSICS
THE SPWLA JOURNAL OF FORMATION EVALUATION RESERVOIR DESCRIPTION

OBM Images in the Eagle Ford Formation



Vol. 55, No. 6



December 2014

About the Cover

The cover features image logs from the paper by Chen et al. The images correspond to (from left to right) the original composite processing image; the composite processing image using the inverted mud angle; the inverted-resistivity image; and the inverted-standoff image.

PETROPHYSICS

December 2014, Vol. 55, No. 6

Contents

- 532 From the President
- 538 From the Editor
- 538 Calendar of Events
- 541 Letter to the Editor

ARTICLES

- 543 **Review of Existing Shaly-Sand Models and Introduction of a New Method Based on Dry-Clay Parameters**
Max Peeters and Antony Holmes
- 554 **Inversion-Based Workflow for Quantitative Interpretation of the New-Generation Oil-Based-Mud Resistivity Imager**
Yong-Hua Chen, Dzevat Omeragic, Tarek Habashy, Richard Bloemenkamp, Tianhua Zhang, Phillip Cheung, and Robert Laronga
- 572 **Experimental Study of the Effects of Wettability and Fluid Saturation on Nuclear Magnetic Resonance and Dielectric Measurements in Limestone**
Lalitha Venkataramanan, Martin D. Hürlimann, Jeffrey A. Tarvin, Kamilla Fellah, Diana Acero-Allard and Nikita V. Seleznev
- 587 **Pore-Scale Evaluation of Dielectric Measurements in Formations with Complex Pore and Grain Structures**
Huangye Chen and Zoya Heidari
- 598 **Physical Basis for a Cased-Well Quantitative Gas-Saturation Analysis Method**
F. Inanc, W.A. Gilchrist, R. Ansari, and D. Chace
- 618 **Reminiscences on the Development of the First Commercial Array-Induction Measurement**
Peter Elkington

IN THE SOCIETY

- 624 Chapter News
- 631 In Memorium
- 633 Index to Volume 55, 2014
- 635 New Members

The Society of Petrophysicists and Well Log Analysts is dedicated to the advancement of the science of formation evaluation through well logging and other formation evaluation techniques. SPWLA is dedicated to the application of these techniques, to the exploration and exploitation of gas, oil and other minerals. PETROPHYSICS publishes original contributions on theoretical and applied aspects of formation evaluation; particularly well logging and petrophysics.

Editor
Oliver C. Mullins
Schlumberger Doll Research
+1-713-240-8703
mullins1@slb.com

Managing Editor
Stephen Prenskey
+1-301-593-4966
steve@sprenskey.com

Publication Manager
Anna Tarlton
InkSpot Printing
2301 S. Shaver
Pasadena, TX 77502, USA
+1-713-472-1100
orders@inkspotprinting.com