



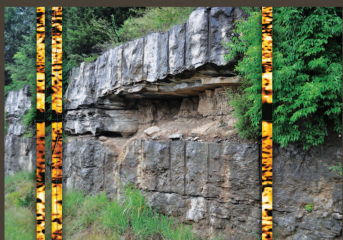
**The Society of
Petrophysicists and
Well Log Analysts**

8866 Gulf Freeway, Suite 320
Houston, TX 77017, USA
P: +1-713-947-8727
F: +1-713-947-7181
Email: Sharon@spwla.org
Membership@spwla.org
www.SPWLA.org

ISSN: 1529-9074

PETROPHYSICS
THE SPWLA JOURNAL OF FORMATION EVALUATION RESERVOIR DESCRIPTION

SPECIAL ISSUE ON CARBONATES



Vol. 56, No. 6



December 2015

About the Cover

The karst outcrop of the Laurel Formation dolostone in Kentucky. The close analog to the high-flow zones (HFZ) in the Grosmont Formation in Alberta overlaid with micro-resistivity borehole images from the well crossing similar solution-enhanced bedding planes. See the paper by MacNeil.

PETROPHYSICS

December 2015, Vol. 56, No. 6

Contents

- 544 From the President
- 545 Calendar of Events
- 550 From the Guest Editor

ARTICLES

- 552 **Reservoir Characterization Challenges Due to the Multiscale Spatial Heterogeneity in the Presalt Carbonate Sag Formation, North Campos Basin, Brazil**
Vivek (D.V.) Chitale, Gbenga Alabi, Pavel Gramin, Scott Lepley, and Leo Piccoli
- 577 **Presalt Carbonate Evaluation for Santos Basin, Offshore Brazil**
Austin Boyd, Andre Souza, Giovanna Carneiro, Vinicius Machado, William Trevizan, Bernardo Santos, Paulo Netto, Rodrigo Bagueira, Ralf Polinski, and Andre Bertolini
- 592 **Petrophysical Characterization of Bitumen-Saturated Karsted Carbonates: Case Study of the Multibillion Barrel Upper Devonian Grosmont Formation, Northern Alberta, Canada**
Alex J. MacNeil
- 615 **Petrophysical Challenges in Giant Carbonate Tengiz Field, Republic of Kazakhstan**
Mark Skalinski, Yegor Se, Ted Playton, Paul Theologou, Wayne Narr, Mike Sullivan, and Robert Mallan

IN THE SOCIETY

- 648 The 56th SPWLA Annual Logging Symposium
- 655 Chapter News
- 669 SPWLA Board of Directors Meeting
- 670 New Members
- 671 Annual Index

The Society of Petrophysicists and Well Log Analysts is dedicated to the advancement of the science of formation evaluation through well logging and other formation evaluation techniques. SPWLA is dedicated to the application of these techniques, to the exploration and exploitation of gas, oil and other minerals. PETROPHYSICS publishes original contributions on theoretical and applied aspects of formation evaluation; particularly well logging and petrophysics.

Editor
Oliver C. Mullins
Schlumberger Doll Research
+1-713-240-8703
mullins1@slb.com

Managing Editor
Stephen Prenskey
+1-301-593-4966
sprenskey@gmail.com

Publication Manager
Anna Tarlton
InkSpot Printing
2301 S. Shaver
Pasadena, TX 77502, USA
+1-713-472-1100
orders@inkspotprinting.com