

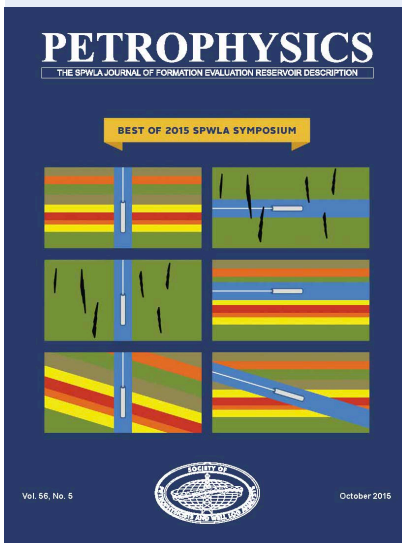


**The Society of
Petrophysicists and
Well Log Analysts**

8866 Gulf Freeway, Suite 320
Houston, TX 77017, USA
P: +1-713-947-8727
F: +1-713-947-7181

Email: Sharon@spwla.org
Membership@spwla.org
www.SPWLA.org

ISSN: 1529-9074



About the Cover

From the paper by Market et al., illustration showing different types of acoustic anisotropy referenced to the wellbore trajectory. Refer to the paper for a detailed explanation.

PETROPHYSICS

October 2015, Vol. 56, No. 5

Contents

- 408 From the President
- 409 Calendar of Events
- 414 From the Editor

ARTICLES

- 420 **Untangling Acoustic Anisotropy**
Jennifer Market, Camilo Mejia, Ovunc Mutlu, Mojtaba P. Shahri, and Joanne Tudge
- 440 **Differing Equilibration Times of GOR, Asphaltenes and Biomarkers as Determined by Charge History and Reservoir Fluid Geodynamics**
Kang Wang, Armin I. Kauerauf, Julian Y. Zuo, Yi Chen, Chengli Dong, Hani Elshahawi, and Oliver C. Mullins
- 457 **Using Advanced Logging Measurements to Develop a Robust Petrophysical Model for the Bakken Petroleum System**
Gary Simpson, John Hohman, Iain Pirie, and Jack Horkowitz
- 479 **Utilization of Electromagnetic Acoustic Transducers in Downhole Cement Evaluation**
Doug Patterson, Alexei Bolshakov, and Paweł J. Matuszyk
- 493 **Integrated Petrophysical Rock Classification in the McElroy Field, West Texas, USA**
Mehrnoosh Saneifar, Mark Skalinski, Paul Theologou, Jeroen Kenter, Clifford Cuffey, and Rafael Salazar-Tio
- 511 **Applying a Consistent Evaluation Approach to Thin-Bedded Sands in a Gulf of Mexico Deepwater Field**
Sarita Salunke and Jeffrey Hamman

CONFERENCE ABSTRACTS

- 521 Formation Evaluation Society of Japan (JFES) 21st Symposium Abstracts

IN THE SOCIETY

- 530 Chapter News
- 537 In Memoriam
- 539 SPWLA Financial Statement
- 540 New Members

The Society of Petrophysicists and Well Log Analysts is dedicated to the advancement of the science of formation evaluation through well logging and other formation evaluation techniques. SPWLA is dedicated to the application of these techniques, to the exploration and exploitation of gas, oil and other minerals. PETROPHYSICS publishes original contributions on theoretical and applied aspects of formation evaluation; particularly well logging and petrophysics.

Editor
Oliver C. Mullins
Schlumberger Doll Research
+1-713-240-8703
mullins1@slb.com

Managing Editor
Stephen Prenskey
+1-301-593-4966
sprenskey@gmail.com

Publication Manager
Anna Tarlton
InkSpot Printing
2301 S. Shaver
Pasadena, TX 77502, USA
+1-713-472-1100
orders@inkspotprinting.com